

法人のデータモデル

GIFコアデータモデル 法人

No.	プレフィックス	項目名	必須項目	最小回数	最大数	項目名（英語）	説明	形式	記入例	名称・形式等の参考元
1	pd	法人番号	必	1	1	legalEntityNumber	法人番号（13桁）を記載。法人番号が指定されている場合は必須。	数値（半角数字）	8000012010038	
2	pd	ID群		0	n	identificationGroup	法人に付与した一意のIDを記載。	pd:ID情報型	{"ID": "XXXXX-00000", "ID種別": "99"}	IMI
3	pd	商号または名称	必	1	1	tradeName	商号または名称を記載。	文字列	株式会社GIF	
4	pd	商号または名称（カナ）	必	1	1	tradeNameKana	名称をカナで記載。	文字列（全角カナ）	カブシキガイシャジーアイエフ	
5	pd	商号または名称（英字）		0	1	tradeNameEn	名称を英語で記載。	文字列（半角文字）	GIF Co., Ltd.	
6	pd	組織種別位置（前株、後株）		0	1	organizationTypePosition	組織種別（株式会社等）を法人名の前後のどちらに付与するかを記載。	文字列	前株	
7	pd	組織種別		0	1	categoryOfOrganization	組織種別（株式会社、有限会社、合名会社、合資会社、合同会社等）を記載。	文字列	株式会社	IMI
8	pd	略称アルファベット		0	1	abbreviatedAlphabet	略称アルファベットを記載。	文字列（半角文字）	GIF	
9	pd	通称		0	1	alternateName	通称を記載。	文字列	ジーアイエフ	schema.org
10	pd	事業活動状況		0	1	activityStatus	活動状況（倒産、破産、休眠、休業、廃業等）を記載。	文字列	営業中	IMI
11	pd	説明		0	1	description	説明を記載	文字列	株式会社GIFは情報通信サービスの提供を中心としたDX事業を推進する企業です。	
12	pd	WebサイトURL		0	1	webSite	法人に関する情報源を示すWebサイトURLを記載。	URI	https://www.xxx.com	schema.org
13	pd	関連組織		0	n	associatedOrganization	関連組織（子会社、提携先等）を記載。	文字列	株式会社きおい	IMI
14	pd	正社員数		0	1	numberOfRegularEmployees	正社員数を記載。	数値（半角数字）	1000	
15	pd	従業員数		0	1	numberOfEmployee	従業員数を記載。	数値（半角数字）	1500	schema.org
16	pd	地物（関連施設）		0	n	feature	法人に関連する地物（関連施設）を記載。	文字列	きおいビル	IMI
17	pd	代表者名称		0	1	representativeName	代表者名称を記載。	pd:個人	山田太郎の個人型のデータモデルを格納	
18	pd	代表者役職名		0	1	representativePosition	代表者役職名を記載。	文字列	代表取締役	
19	pd	設立年月日		0	1	establishedDate	設立日を記載。	日付（YYYY-MM-DD）	1990-04-01	IMI
20	pd	創業年		0	1	yearOfEstablishment	創業年を記載。	文字列	1990年	
21	pd	事業種目		0	n	businessCategory	事業種目（日本標準産業分類）を記載。	文字列	3921 情報処理サービス業	IMI
22	pd	事業年度開始日		0	1	fiscalYearStartDay	事業年度の開始日を記載。	日付（MM-DD）	04-01	IMI
23	pd	資本金		0	1	capital	資本金を記載。	数値（半角数字）	10000000	IMI
24	pd	登記住所		0	1	registeredAddress	登記住所を記載。	pd:住所	住所型のデータモデルを格納	IMI
25	pd	事業所情報		0	n	businessPlaceInformation	事業所情報を記載。	pd:事業所	事業所型のデータモデルを格納	
26	pd	連絡先情報	必	1	1	contactPointInformation	連絡先情報を記載。	pd:連絡先（pd:法人連絡先）	法人連絡先型のデータモデルを格納	schema.org

Type/Sub-properties	Type	Definition
nc:OrganizationType		A data type for a body of people organized for a particular purpose.
Click here for elements with this data type Click here for sub-types		
nc:OrganizationAbbreviationText	nc:TextType	An abbreviation, acronym, or code for an organization name.
nc:OrganizationActiveIndicator	niem-xs:boolean	True if an organization is active; false if it is inactive.
nc:OrganizationActivityAbstract	<abstract element, no type>	A data concept for an activity that an organization is known or thought to be involved with.
<i>Substitutable Elements:</i>		
+ nc:OrganizationActivityText	nc:TextType	An activity that an organization is known or thought to be involved with.
nc:OrganizationBranchName	nc:TextType	A name of the chapter or branch by which an organization is known within a larger group of organizations.
nc:OrganizationCategoryAbstract	<abstract element, no type>	A data concept for a kind or functional type of organization.
<i>Substitutable Elements:</i>		
+ nc:OrganizationCategoryText	nc:TextType	A kind or functional type of organization.
+ j:OrganizationCategoryNDExCode	index:OrganizationCategoryCodeType	A kind of organization.
+ j:OrganizationCategoryNLETSCode	nlets:OrganizationCategoryCodeType	A functional kind of an organization.
+ scr:OrganizationCategoryCode	scr:OrganizationCategoryCodeType	A kind of organization.
nc:OrganizationDayContactInformation	nc:ContactInformationType	A means of contacting an organization during daytime hours.
nc:OrganizationDescriptionText	nc:TextType	A description of an organization.
nc:OrganizationDoingBusinessAsName	nc:TextType	A name an organization uses for conducting business.
nc:OrganizationEmergencyContactInformation	nc:ContactInformationType	A means of contacting an organization in the event of an emergency.
nc:OrganizationEstablishedDate	nc:DateType	A date an organization was started.
nc:OrganizationEveningContactInformation	nc:ContactInformationType	A means of contacting an organization during evening or early night hours.
nc:OrganizationForeignAffiliate	nc:OrganizationType	A foreign organization that has some relationship or association with an organization.

nc:OrganizationIdentification	nc:IdentificationType	An identification that references an organization.
nc:OrganizationIncorporatedIndicator	niem-xs:boolean	True if an organization is incorporated; false otherwise.
nc:OrganizationIncorporationDate	nc:DateType	A date an organization incorporated (e.g., corporation).
nc:OrganizationIncorporationLocation	nc:LocationType	A location where an organization incorporated.
nc:OrganizationJurisdiction	nc:JurisdictionType	An area of service or jurisdiction an organization has over a region.
nc:OrganizationLEIIdentification	nc:IdentificationType	An identification for a Legal Entity Identifier (LEI), to uniquely identify legally distinct entities that engage in financial transactions.
nc:OrganizationLicenseIdentification	nc:IdentificationType	A license identification for an organization.
nc:OrganizationLocalIdentification	nc:IdentificationType	An identification assigned at a local level to an organization.
nc:OrganizationLocation	nc:LocationType	A location of an organization.
nc:OrganizationName	nc:TextType	A name of an organization.
nc:OrganizationNameEffectiveDate	nc:DateType	A date the organization name became effective.
nc:OrganizationNameTerminationDate	nc:DateType	A date the organization name became invalid.
nc:OrganizationNightContactInformation	nc:ContactInformationType	A means of contacting an organization during late-night hours.
nc:OrganizationOtherIdentification	nc:IdentificationType	An alternate identification assigned to an organization.
nc:OrganizationParentAbstract	<abstract element, no type>	A data concept for an entity that owns, controls, or operates the organization.
<i>Substitutable Elements:</i>		
+ nc:OrganizationParentAffiliate	nc:OrganizationType	An affiliate organization that owns, controls, or operates the organization.
+ nc:OrganizationParentOrganization	nc:OrganizationType	An organization that owns, controls, or operates the organization.

nc:OrganizationPrimaryContactInformation	nc:ContactInformationType	A preferred means of contacting an organization.
nc:OrganizationPrincipalOfficial	nc:PersonType	A chief or high ranking executive of an organization.
nc:OrganizationServiceHoursAbstract	<abstract element, no type>	A data concept for an availability of an organization.
<i>Substitutable Elements:</i>		
+ nc:OrganizationServiceHoursText	nc:TextType	A availability of an organization.
+ j:OrganizationServiceHoursCode	nlets:AgencyServiceHoursCodeType	A availability of an organization or agency.
nc:OrganizationSizeAbstract	<abstract element, no type>	A data concept for a size of an organization.
<i>Substitutable Elements:</i>		
+ nc:OrganizationSizeText	nc:TextType	A size of an organization.
nc:OrganizationStatus	nc:StatusType	A status of an organization.
nc:OrganizationSubUnit	nc:OrganizationType	A division of an organization.
nc:OrganizationSubUnitName	nc:TextType	A name of a subdivision of an organization.
nc:OrganizationTaxIdentification	nc:IdentificationType	A tax identification assigned to an organization.
nc:OrganizationTerminationDate	nc:DateType	A date an organization went out of business.
nc:OrganizationUnitName	nc:TextType	A name of a high-level division of an organization.
nc:OrganizationValidDate	nc:DateType	A date to which the organizational unit is valid.
nc:OrganizationAugmentationPoint	<abstract element, no type>	An augmentation point for OrganizationType.
<i>Substitutable Elements:</i>		
+ cyber:OrganizationAugmentation	cyber:OrganizationAugmentationType	Additional information about an organization
+ em:OrganizationAugmentation	em:OrganizationAugmentationType	Additional information about an organization.
+ hs:OrganizationAugmentation	hs:OrganizationAugmentationType	Additional information about an organization.
+ j:OrganizationAugmentation	j:OrganizationAugmentationType	Additional information about an organization.
+ scr:OrganizationAugmentation	scr:OrganizationAugmentationType	Additional information about an organization.

Core Business Vocabulary

31 January 2024

► More details about this document

Copyright © 2024



§ 1. Overview

This document describes the usage of the following main entities for a correct usage of the Core Vocabulary:

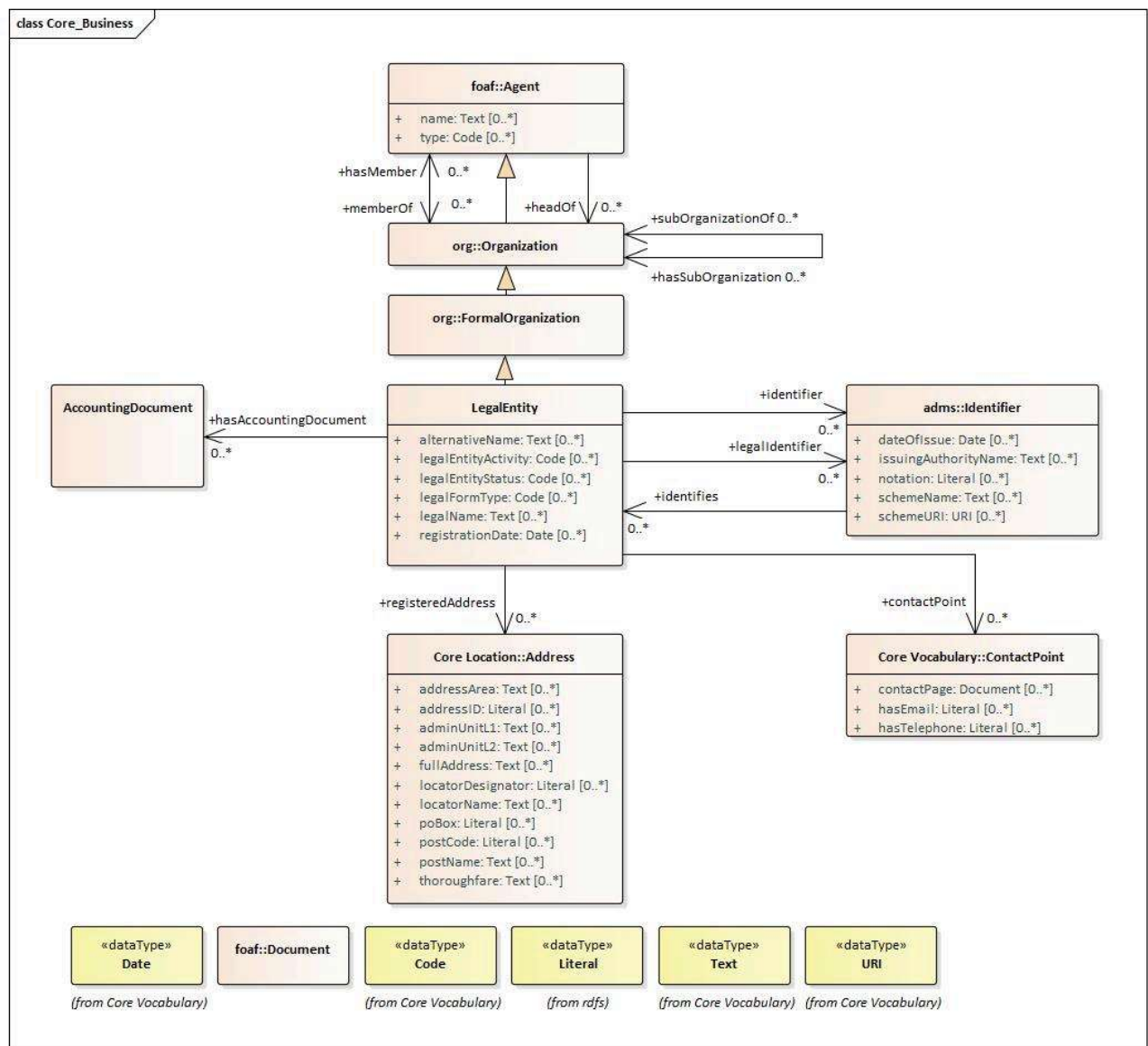
| Accounting Document | Address | Contact Point | Identifier | Legal Entity |

The main entities are supported by:

| Agent | Document | Formal Organization | Organization |

And supported by these datatypes:

| Code | Date | Literal | Text | URI |



§ 2. Main Entities

The main entities are those that form the core of the Core Vocabulary.

§ 2.1 Legal Entity

Definition

A self-employed person, company, or organization that has legal rights and obligations.

Usage Note

A Legal Entity able to transact business, typically registered with a body able to confer legal status such as a national business register. It is able to trade, is legally liable for its actions, accounts, tax affairs etc. This makes Legal Entities distinct from the concept of organisations or groups. Many organisations exist that are not Legal

Entities, yet to the outside world they have staff, hierarchies, locations etc. Other organisations exist that are an umbrella for several Legal Entities (universities are often good examples of this). This vocabulary is concerned solely with registered Legal Entities and does not attempt to cover all possible trading bodies.

Subclass of

Formal Organization

Properties

For this entity the following properties are defined: alternative name , contact point , has accounting document , identifier , legal entity activity , legal entity status , legal form type , legal identifier , legal name , registered address , registration date .

Property	Range	Card Definition	Usage
<u>alternative name</u>	<u>Text</u>	0..* Any name by which a Legal Entity is known, other than their legal name.	Some jurisdictions recognise concepts such as a trading name or alternative forms of a legal entity's name. The alternative name property can be used to record such names but should not be used to record translations of the primary legal name. Where more than one name exists and where they have equal standing but are expressed in different languages, identify the language used in each of the multiple names.
<u>contact point</u>	<u>Contact Point</u>	0..* The main contact information of the resource.	Usually a phone number and e-mail address. Other contact methods may be included, including online contact information, but this is conceptually distinct from the organization's homepage that may or may not

Property	Range	Card Definition	Usage
			provide contact information.
<u>has</u> <u>accounting</u> <u>document</u>	<u>Accounting</u> <u>Document</u>	0..* The accounting document provided by an organisation.	
			Legal Entities may have any number of identifiers (but only one legal identifier). For example, in many jurisdictions, a business will have one or more tax numbers associated with them which do not, by themselves, confer legal entity status. An individual may be issued with identifiers for everything from social security to club membership. The identifier relationship must not be used to link to the identifier issued by the authority that conferred legal entity status on a business.
<u>identifier</u>	<u>Identifier</u>	0..* The unambiguous structured reference for the Legal Entity, which is different from the one denoting its legal status.	
<u>legal entity</u> <u>activity</u>	<u>Code</u>	0..* The area of work in which the Legal Entity is engaged.	This is a general term that encompasses all the economic activities carried out by a company during the course of business. The activity of a company should be recorded using a controlled vocabulary. Several such vocabularies exist, many of which map to the UN's ISIC codes. Where a particular

Property	Range	Card Definition	Usage
<u>legal entity status</u>	<u>Code</u>	0..* Information about the viability of the current position of the legal entity.	controlled vocabulary is in use within a given context, such as <u>SIC codes</u> in the UK, it is acceptable to use these, however, the preferred choice for European interoperability is <u>NACE</u> . Recording the status of a company presents the same issues as its type. The terms 'insolvent', 'bankrupt' and 'in receivership,' for example, are likely to mean slightly different things with different legal implications in different jurisdictions. Best practice for recording various other status levels is to use the relevant jurisdiction's terms and to identify the controlled vocabulary used.
<u>legal form type</u>	<u>Code</u>	0..* The classification of the Legal Entity as a member of a particular group in the context of legal registration.	To indicate the legal form type of a Legal Entity the <u>Entity Legal Form code list</u> published by the Publications Office of the EU and maintained by <u>GLEIF</u> can be used.
<u>legal identifier</u>	<u>Identifier</u>	0..* The unambiguous structured reference assigned to the Legal Entity by the legal authority that registered it.	Legal Entity must have a unique identification number, allowing it to be clearly identified in communication across business registers. The details of the registration are provided as properties

Property	Range	Card Definition	Usage
			of the Identifier class. The Core vocabulary sets no restriction on the type of legal identifier. In many countries, the business register's identifier is the relevant data point.
<u>legal name</u>	Text	0..* The name under which the Legal Entity is legally registered.	The legal name is different from the alternative (trade) name which is a pseudonym used by companies that do not operate under their registered company name. A business might have more than one legal name, particularly in countries with more than one official language. In such cases, and where the encoding technology allows, the language of the string should be identified.
<u>registered address</u>	Address	0..* The address at which the Legal Entity is legally registered.	In almost all jurisdictions, Legal Entities must register a public address. This may or may not be the actual address at which the Legal Entity does its business, it is commonly the address of their lawyer or accountant, but it is the address to which formal communications can be sent. The registered address property points to the Address of the Registered Site. This

Property	Range	Card Definition	Usage
<u>registration</u> <u>date</u>	Date	0..*	The date on which the legal entity has registered in some jurisdiction for regulatory and / or for tax purposes. property can be seen as a shorthand for this property path.

