



The Spanish Evaluation and Certification Scheme

Luis Jiménez

**Head of the Certification Area
Certification Body
National Cryptologic Center**

organismo.certificacion@cni.es



- **Background**
- **The establishment of the Scheme**
- **Current status**
- **Trends and perspectives**
- **Contact data**



Background



Convergent action lines:

- **Spain joined the CCRA, with the signature of the Ministry of Public Administration, as a consuming participant in 2000.**
- **The Spanish Ministry of Defense established, also in 2000, an evaluation and certification scheme, based on ITSEC/ITSEM, to give service to internal needs and to be used by international defense projects.**
- **Act 11/2002 6th May, regulated the National Intelligence Centre (CNI), creating the National Cryptologic Center (CCN), and**
- **Royal Decree 421/2004, 12th March, finally regulated and defined the scope and functions of the National Cryptologic Centre, as the certifying body for the national scheme of evaluation and certification of security for information technology.**



Background



So the Scheme has:

- **substantial experience in the CCRA MC and project;**
- **inherited the Ministry of Defense scheme, based on ITSEC/ITSEM, with ongoing system evaluations;**
- **its roots in the National Cryptologic Centre (CCN);**
- **being created by law.**



The establishment of the Scheme

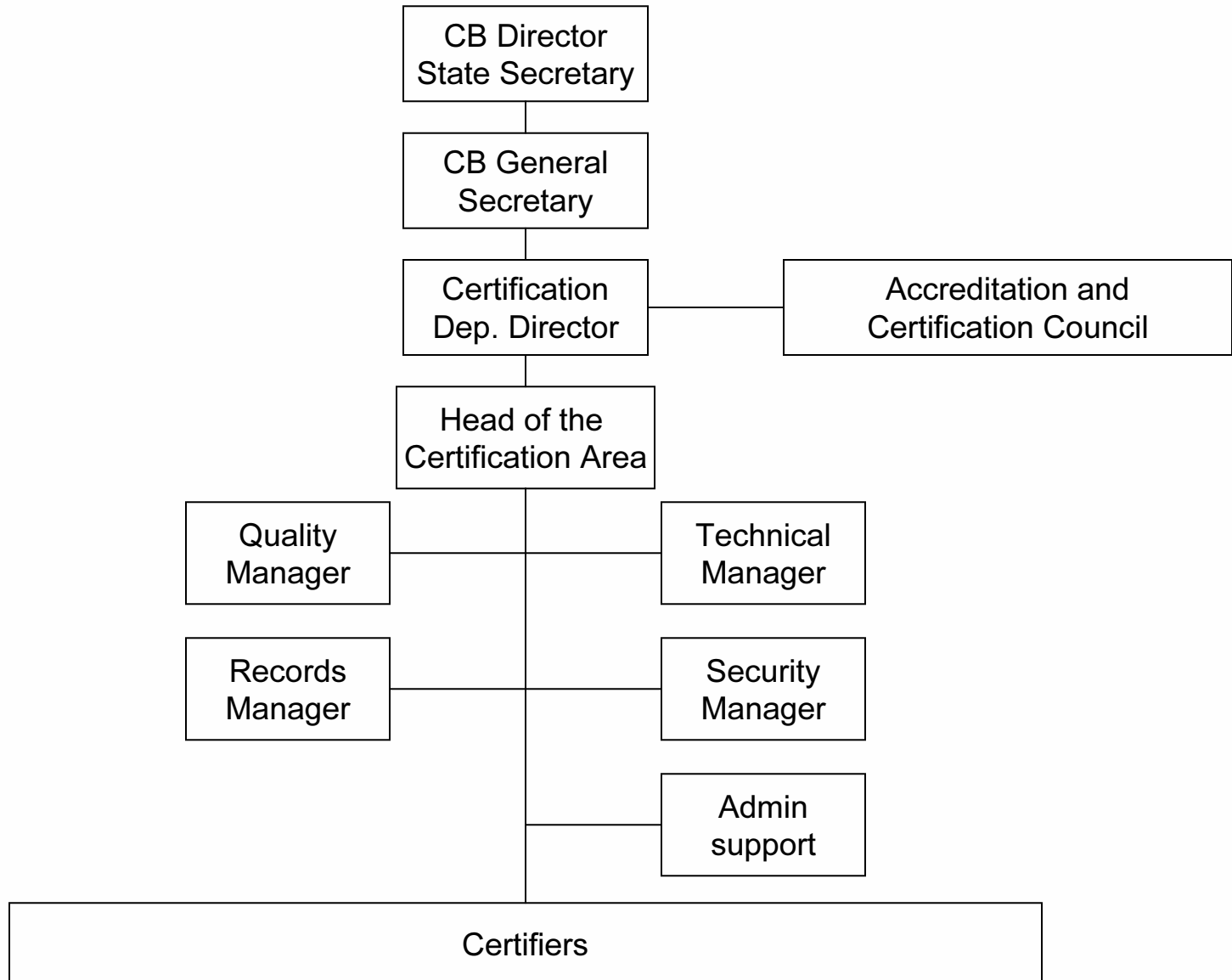


With this legal development and framework:

- **Operation of the CCN as a Certification Body started in July 2004, with the approval of its quality system, derived documentation and procedures, the assignment of personnel and resources, and the reception of the first Certification Application Form.**
- **An Evaluation Facility was already in place, which had to expand their capabilities to perform CC/CEM evaluations, undergoing the Scheme licensing process;**



The establishment of the Scheme





Current status



Ongoing CC evaluations (as of 01/08/2005)

KEY ONE 3.0

Start date:: 9/07/2004

Developer: [Safelayer, S.A.](#)

Evaluation level: **EAL4 + ALC_FLR.2**

Protection Profile: **CIMC Level 3**

Tarjeta Electrónica del Ministerio de Defensa TEMD 1.0

Start date:: 19/07/2004

Developer: [Microelectrónica Española S.A.](#)

Evaluation level: **EAL4 + AVA_VLA.4, AVA_MSU.3**

Protection Profile: **CWA 14169 Secure signature-creation devices**

CERES 3.0

Start date:: 30/07/2004

Developer: [FNMT](#)

Evaluation level: **EAL4 + AVA_VLA.4, AVA_MSU.3, ALC_FLR.1**

Protection Profile: **CWA 14169 Secure signature-creation devices**



Trends and perspectives



- **The Scheme is planned to be shadowed in 2006 Q1.**
- **The input queue for evaluation and certification seems to be in a pretty good shape for the next two years, with products related to the electronic Signature playing an important role in these requests.**
- **A second Evaluation Facility is currently undergoing the licensing process, which will allow to process all those expected evaluations.**



Trends and perspectives



- **Spanish Public Administration will be assigned specific budget for the next 4 years to promote security certification in Spain, by funding developer and evaluation efforts.**
- **One of the main lines of action is to promote the translation into PP-form of the current security requirements for products and systems to be procured by the Public Administration, hence allowing those PPs to be considered during the procurement of services and goods.**



Contact data



Find the web site of the Scheme at www.oc.ccn.cni.es



en es

Certification Body	<h2>The CCN as Certification Body</h2>
Licensed laboratories	The Certification Body (CB) of the Spanish Evaluation and Certification Scheme operates under the scope of the National Cryptologic Center, as laid out in the Act 11/2002, Act 11/2002, 6th May , regulating the National Intelligence Centre, and the Royal Decree 421/2004, 12th March , regulating the National Cryptologic Centre.
Certification	
Documents	The Certification Body operates under request of any private or public parties that may wish to perform as security evaluation licensed laboratories, as well as under request of any private or public product or system developers that may wish to certify the security properties by the Scheme and when such products or systems are subject to be included under the scope of the National Cryptologic Centre.
Links	
News:	
CC/CEM v2.3 is now available.	The Certification Body licenses laboratories based on the compliance of the requirements laid out in Chapter two , and in accordance with the procedure established in Chapter three of the Rules for the security evaluation and certification of information security technologies .
	The Certification Body certifies the security of information technology products in accordance with the procedure established in Chapter four , and following the evaluation standards, criteria and methodology listed in Chapter six of the Rules for the security evaluation and certification of information security technologies .



Questions welcomed

Luis Jiménez

**Head of the Certification Area
Certification Body
National Cryptologic Center**

organismo.certificacion@cni.es