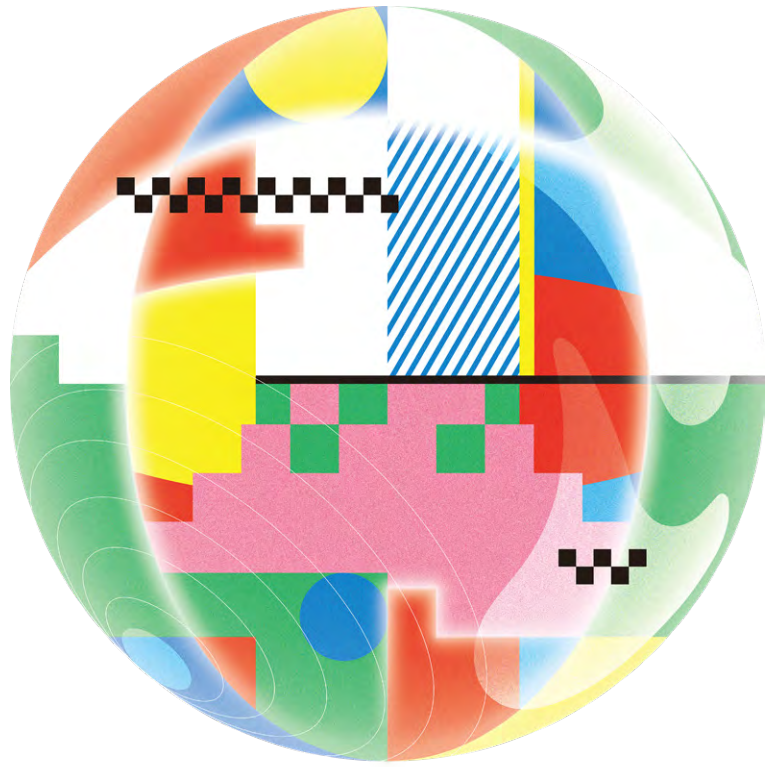




MITOU WONDER



The MITOU Programs fully support challenges of individuals with excellent ideas and technical skills using IT.

Support you to solve business/social issues with your innovative ideas!

Applications for FY2024 MITOU Advanced Program are now being Accepted!



**Supported by
Professional Mentors**



**Grants up to
15 million yen / project**



No Age Limit

**FY2024
Project Manager**

Hiroshi Ishiguro

Professor
(Distinguished Professor),
Department of Systems
Innovation, Graduate
School of Engineering
Science, Osaka University
Visiting Director (ATR fellow), Hiroshi Ishiguro
Laboratories at the Advanced
Telecommunications Research Institute (ATR)



Shigeru Urushibara

Chairman and
Founder, UL
Systems, Inc.
CEO, ULS
Group, Inc.
CEO, Archway Inc.



Mami Kajita

Founder & CEO,
Singular
Perturbations
Inc.



Kazuyuki Shudo

Professor,
Academic
Center for
Computing and
Media Studies,
Kyoto University



Tatsuya Harada

Professor,
Research Center
for Advanced
Science and
Technology, The
University of Tokyo



Yutaka Hirano

President,
HIRANO
Research Lab.



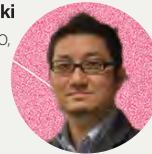
Akihito Fujii

CEO and
Representative
Director, KDDI
Digital
Divergence
Holdings
Corporation
Executive Officer, KDDI Corporation



Hirofumi Miki

President & CEO,
MK
Management
Inc.



Akiko Murakami

Executive Officer,
Chief Digital
Officer, General
Manager of DX
Department
Sompo Japan
Insurance Inc.



Pre-application Deadline:

April 5, 2024 at 12:00* (noon)

*Japan Standard Time



The MITOU Advanced Program

Projects are invited from MITOU-quality IT talents* who have innovative ideas utilizing IT that have unchartedness, business potential and/or high social significance, and development feasibility.

* MITOU-quality IT talents : Human resources with excellent ideas and technical skills who can create innovations by making full use of IT.

The MITOU program fully supports your challenge to realize your dreams.

The Mitou Advanced Program supports your dreams such as being an entrepreneur or solving social issues with your innovative idea and IT skills.

Project managers (PMs) will provide enthusiastic guidance and full support to you in the challenge of realizing your dreams.

No age limit

- There is no age limit for applications.
- Individuals and groups are both eligible to apply. Applicants who are affiliated with a company or other organization are required to obtain approval from their organization to apply.

Support for project costs

- The project will be supported for project costs (up to 15 million yen) based on state of progress.

Professional Support

- Through the development period, the PM serves as a mentor and is in charge of direct guidance.
- Support is also available from Business Advisors who are experts in the business, legal and intellectual property fields

Connecting with Mitou Community

- Opportunities to interact with fellow adopters and other active Mitou alumni are also provided.
- Adopters will receive the stimulation that only Mitou community can provide.

Intellectual property rights belong to the adopters

- Based on the Japanese version of the Bayh-Dole system, intellectual property rights to the developed deliverables belong to the adopters.
- After the development period, business activities can be conducted based on the intellectual property rights.

Development period schedule

During the development period, adopters will develop at their own pace. They will be accompanied by PM who will support them with advice via e-mail and meetings. At each milestone of the development period, conferences are held with other projects and graduates of the program. This is a good opportunity to present their own projects

◆ Joint Meeting

Joint meetings are held with adopters supported by other PMs. Learning about and discussing the development of other projects is a great stimulus

◆ Conferences

Conferences are held at each milestone.

Kick-off meeting [around July]

The first event after the adoption of the program, where adopters, PMs, and alumni gather. Each project presents their ideas and receive a variety of feedback.

Interim report conference [around October]

Adopters, PMs, and alumni gather again. The status of the development will be reported.

Final presentation conference [around February]

This is a great opportunity to present the project results during the development period. The video of the event will be shown on the YouTube IPA Channel later.



How to Apply

Applications will be accepted online.

- (1) Entry for pre-application
- (2) Check the "Application Guidelines" on the Application Overview page, prepare a proposal, and submit it together with the required documents.

Pre-application Deadline:

**April 5, 2024
at 12:00* (noon)**

*Japan Standard Time



CONTACT

IPA Information-technology
Promotion
Agency, Japan

MITOU Planning Group, Innovation Department, Digital Infrastructure Center
E-mail : mitou-hukyu@ipa.go.jp